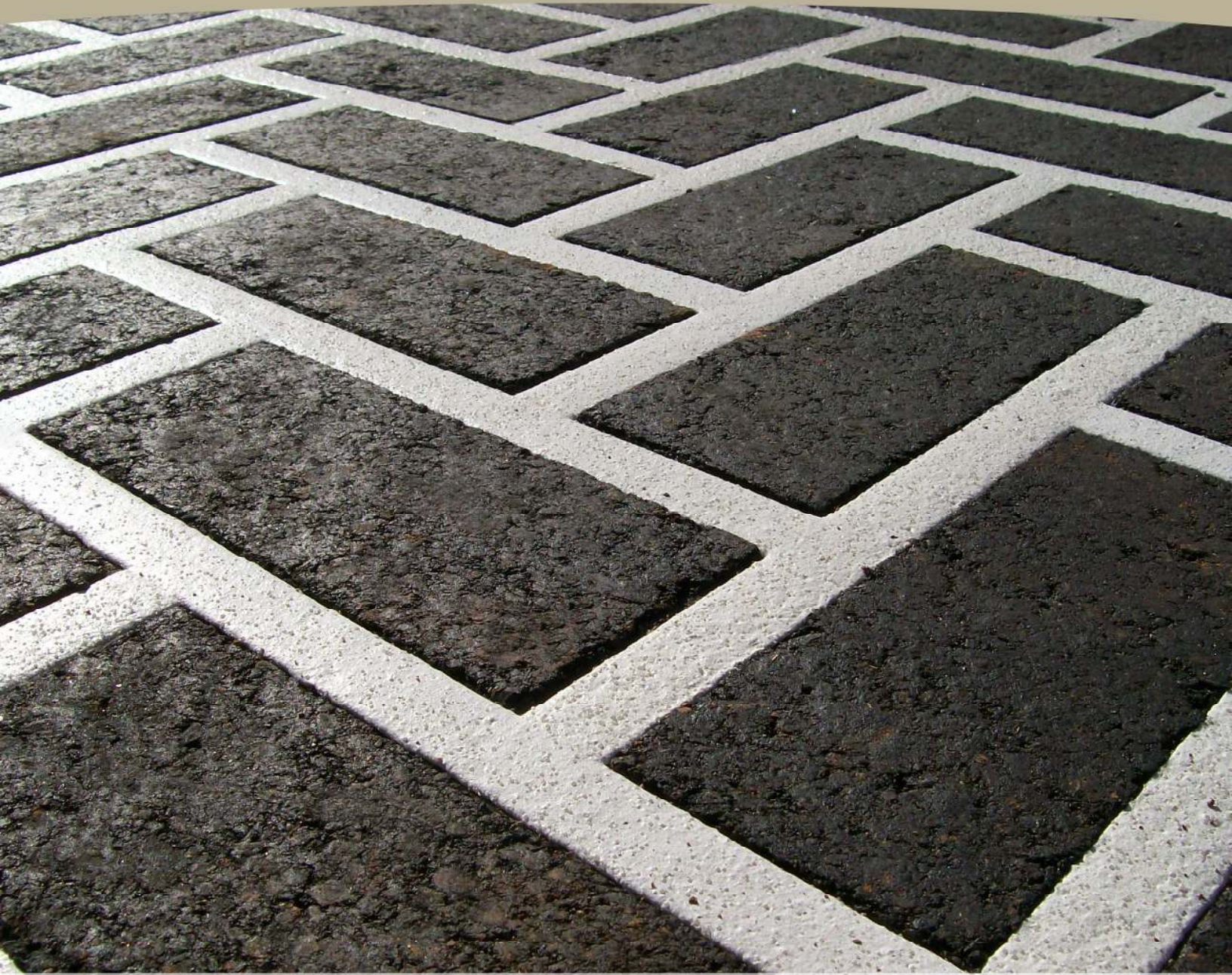


ThermoPrint



Description

ThermorPrint™ surfacing system consists of imprinting a pattern into a heated asphalt surface, lifting the pattern stencil and filling the imprint with thermoplastic specially tooled to fill the imprint. The thermoplastic is then heated providing a thermal bond to the asphalt. The surface is left to cool and is ready for traffic. A variety of patterns and colors are available.

safety durability & design
www.patternpaving.com



Pattern
Paving
Products